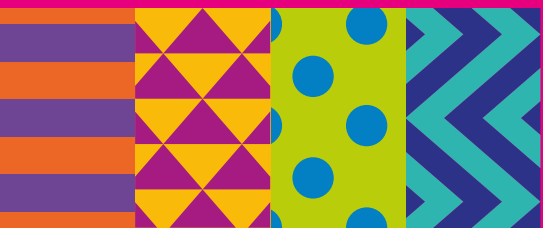


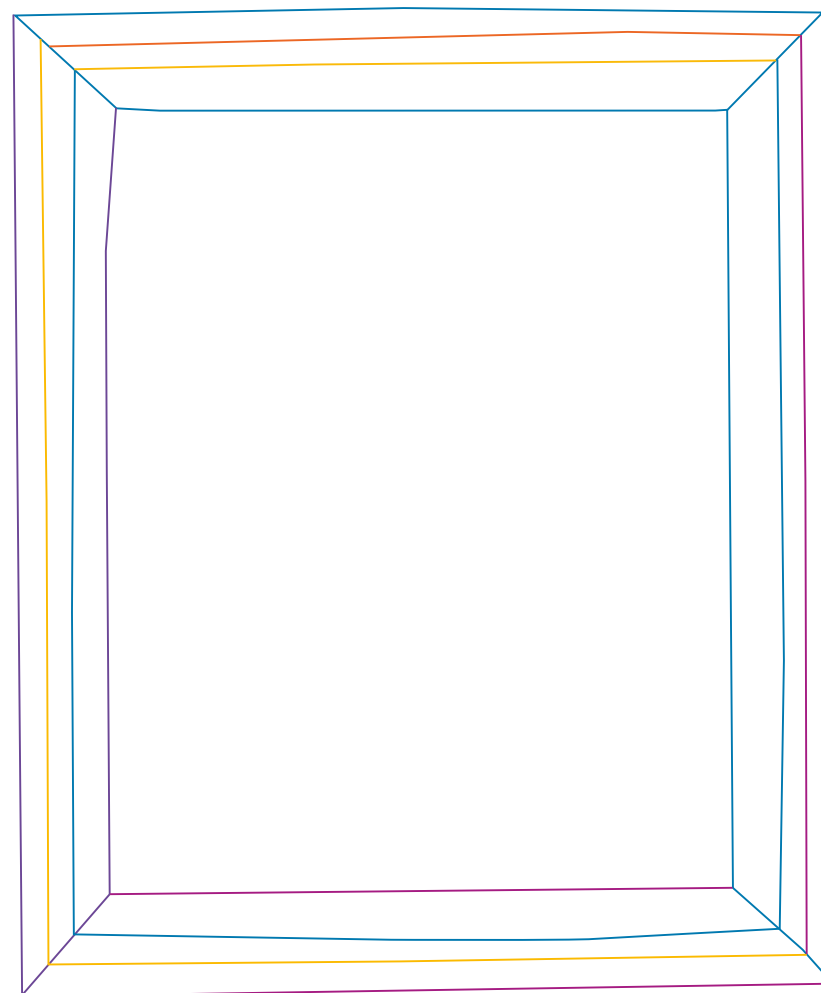
**BALTIC**

**GREAT  
EXHIBITION  
EXPLORERS**



**This book belongs to:**

\_\_\_\_\_



# GREAT EXHIBITION OF THE NORTH

22 June – 9 September 2018

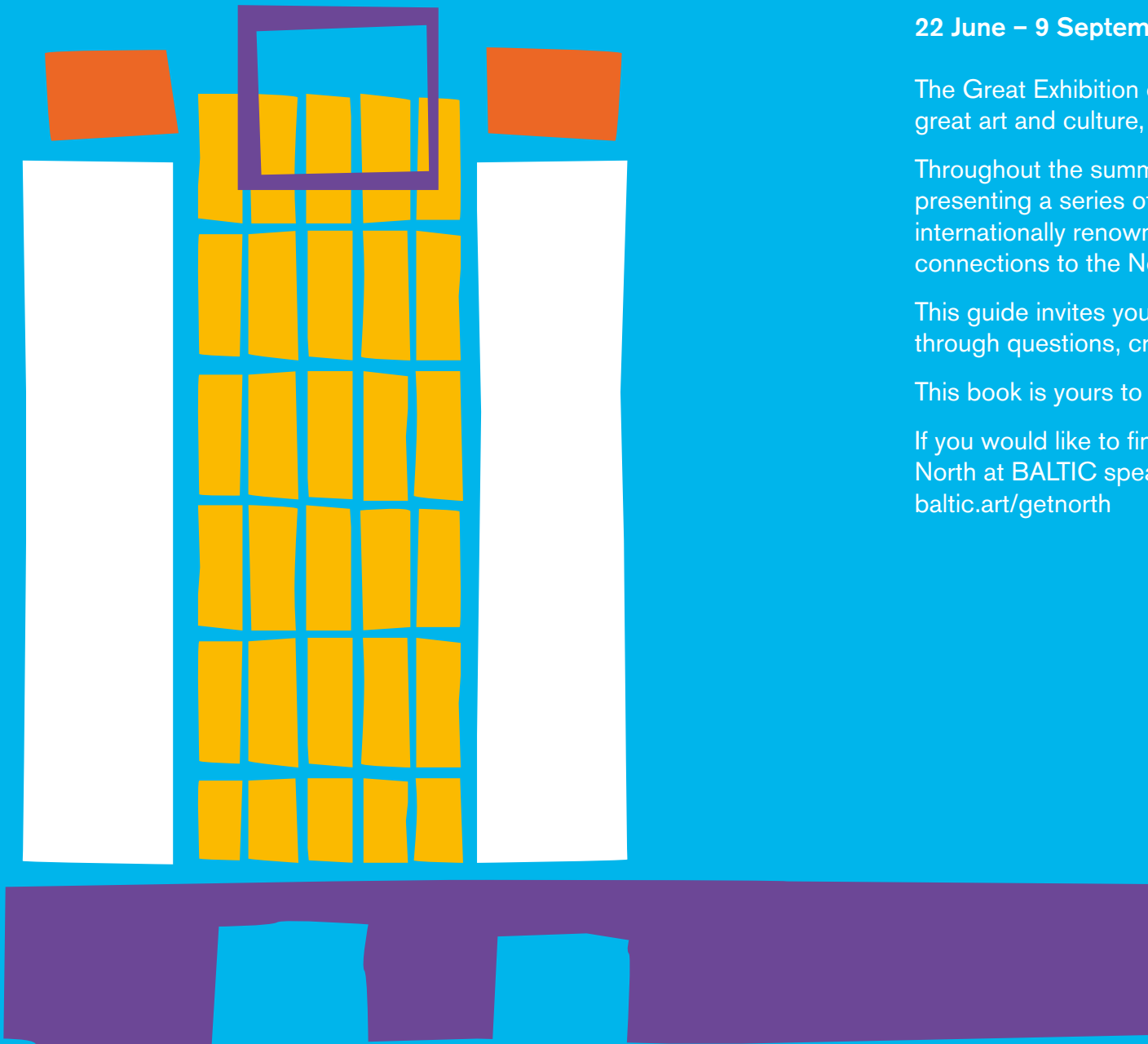
The Great Exhibition of the North is an 80-day celebration of great art and culture, design and innovation.

Throughout the summer BALTIC Centre for Contemporary Art is presenting a series of exhibitions and offsite commissions from internationally renowned artists, all of whom have strong connections to the North.

This guide invites you to look closer at BALTIC's exhibitions through questions, creative prompts and actions.

This book is yours to keep. Write in it, draw in it and transform it.

If you would like to find out more about the Great Exhibition of the North at BALTIC speak to a member of BALTIC Crew or visit [baltic.art/getnorth](http://baltic.art/getnorth)



**Lubaina Himid: *Our Kisses are Petals***

**Location: Ground Floor gallery**

Lubaina Himid was born in 1954 in Zanzibar, Tanzania.

She is a British artist, curator and Professor of Contemporary Art at the University of Central Lancashire, Preston.

Lubaina makes artworks using a variety of different materials and techniques including drawing, painting, collage and installation.

She's interested in listening to, and sharing stories from, people who aren't always given the opportunity to be heard. Her work celebrates the things that make people special and unique.

Lubaina is interested in the different ways people communicate with each other. *Our Kisses are Petals* is partly inspired by hidden messages found in Kanga, a colourful fabric traditionally worn by East African women.



Lubaina Himid, *Our Kisses are Petals*. Installation view BALTIC Centre for Contemporary Art, 2018. Photo: Colin Davison © 2018 BALTIC

## TALK

Share a story with someone you know. It can be real or imagined.

- Who is your story about?
- Where do they live?
- What do they like to do?

## LOOK

Find words in Lubaina's work that begin with or contain the following letters:

_____	C
_____	O
_____	M
_____	M
_____	U
_____	N
_____	I
_____	T
_____	Y

## DO

Ask a member of BALTIC Crew how to move the flags using the pulley system.

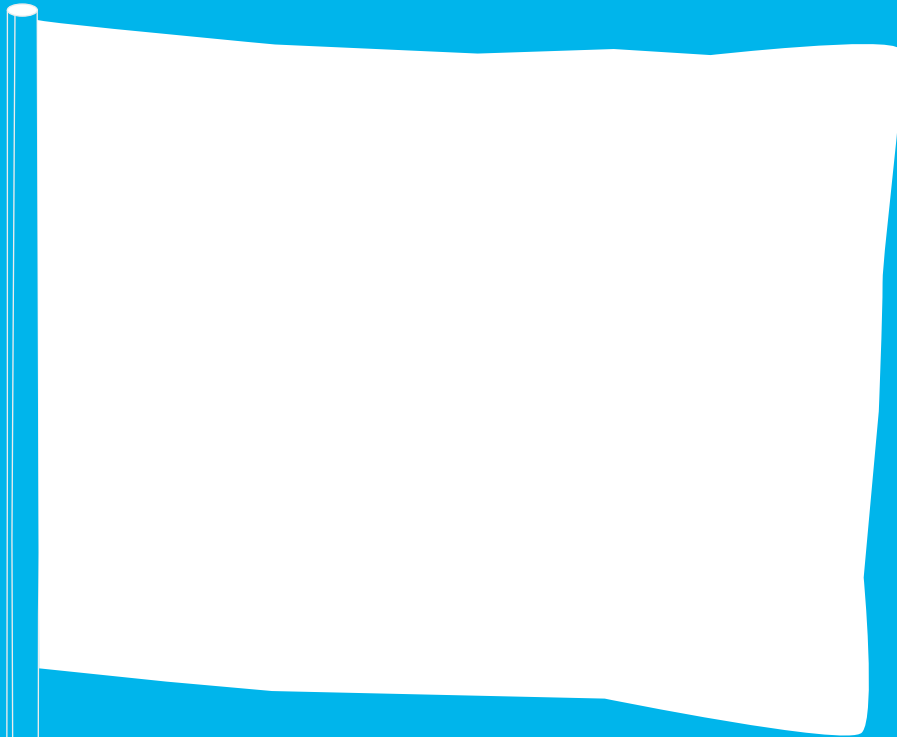
Pull the flags and change the space!

## CREATE

Head to Quay (Level 2) and make a flag that represents you.

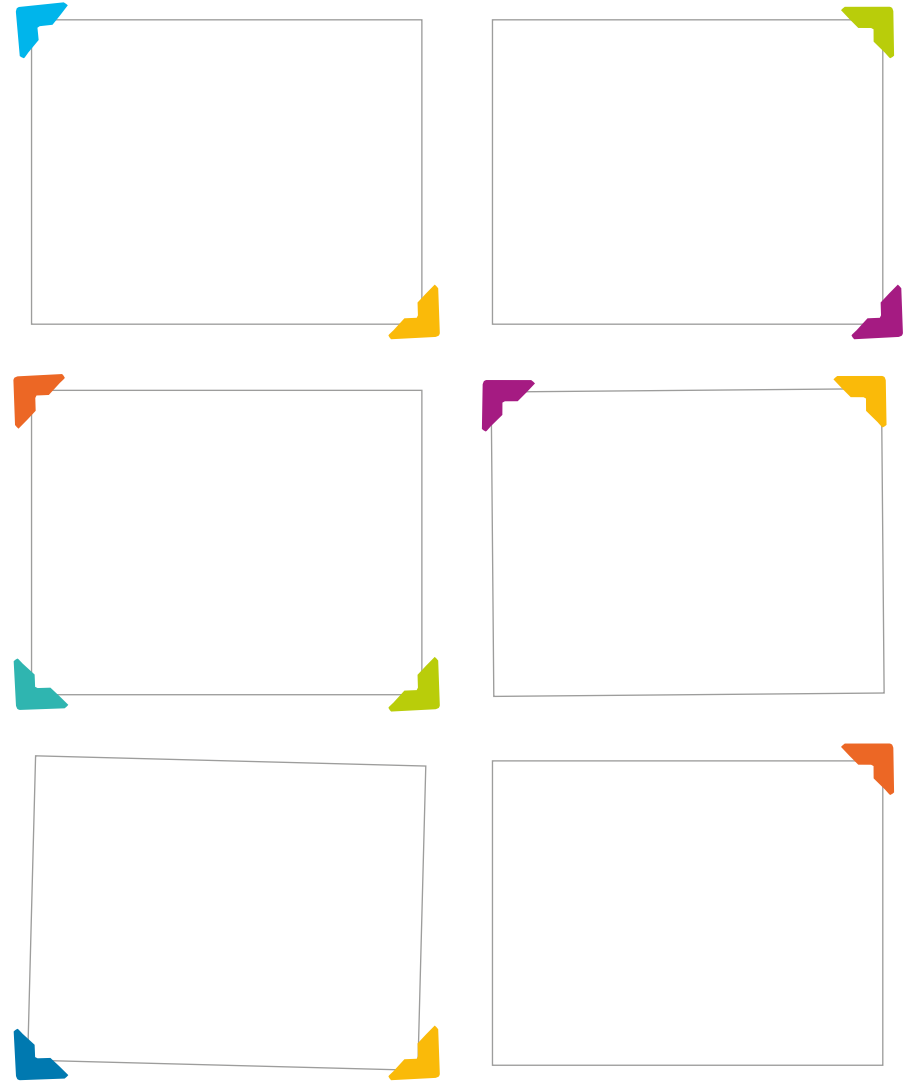
Think about words, colours, patterns and images that mean something special.

Plan your design here!



## BEYOND BALTIC

Look to the sky and keep track of the flags you see this summer. Take photos, draw or write and collect the flags you see.



Look out for unusual flags; windswept washing lines, blowing bunting or blustery boat sails.

**Phil Collins: *Ceremony***  
**Location: Level 2 gallery**

Phil Collins was born in 1970 in Runcorn, UK.

He is a British artist and Professor of Video Art and Performance at The Academy of Media Arts, Cologne, Germany.

Phil uses film to tell the stories of people and communities from all around the world.

In his film *Ceremony* he follows a statue of German philosopher Friedrich Engels on a journey from the Ukraine to Manchester.

Friedrich lived and worked in Manchester for over twenty years in the 19th Century. Whilst he was there he spent time learning about the different ways that people lived. Friedrich was particularly interested in people experiencing poverty, and in making the world a more equal place.

Throughout *Ceremony* we also hear different stories from people who live in Manchester now.



Phil Collins, *Ceremony*, 2017. Courtesy Shady Lane Productions.

## TALK

If you could build a statue of anyone, who would you choose and why?

- Where would you put it?
- How big would it be?
- What would it be made of?

## LOOK

Look out for other statues in the North East. Who are they? What do they commemorate\*? Look out for Grey's Monument in Newcastle. How has it changed this summer?

## DO

Share the story of your own life. Use words or images:

I have been...

I would like to...

\*Commemorate means to remember and show respect.

## CREATE

Think about how we can all make the world a better place.

Make a list of rules you'd like people to follow in your new and improved world.

1.

2.

3.

4.

5.

Why not turn one of your rules into a sign and protest for a better world?

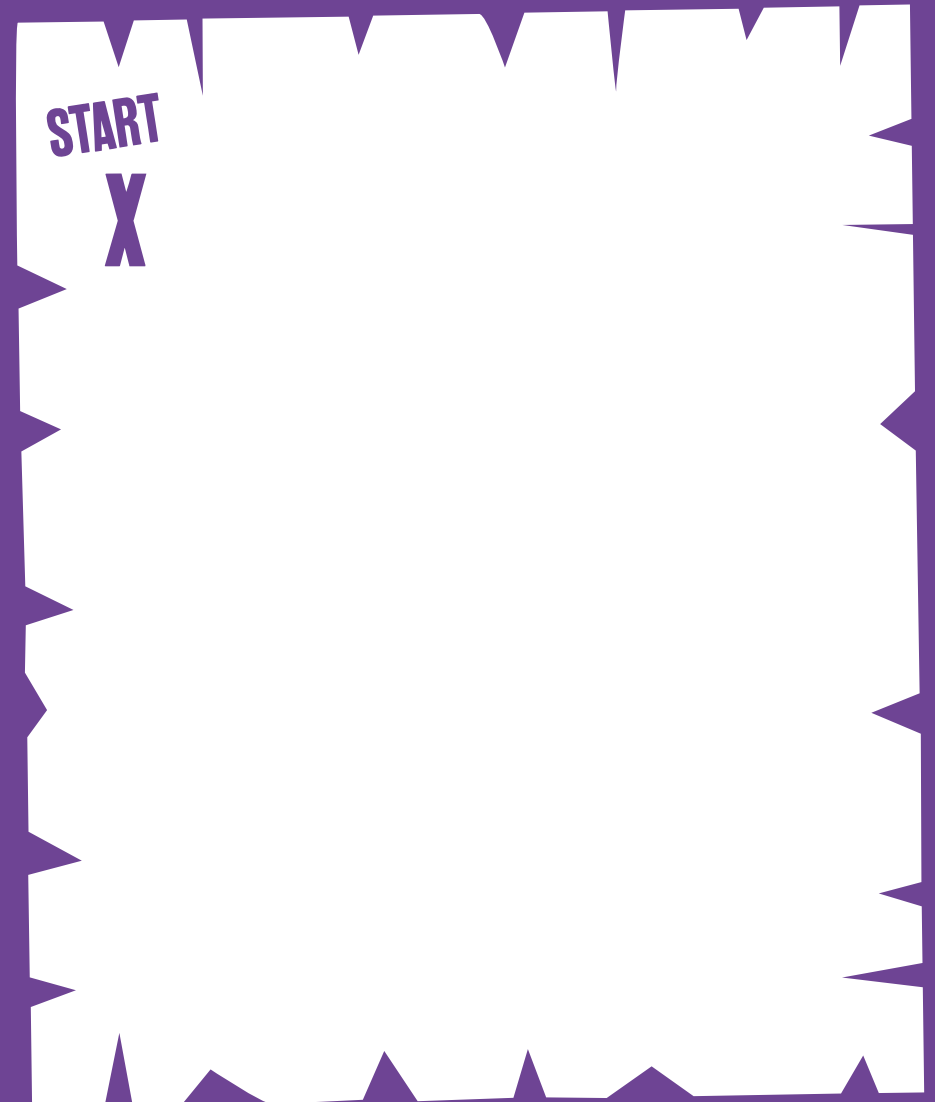
Head to Quay (Level 2) to use the materials there.

## BEYOND BALTIC

Make maps of the journeys you make this summer.

Mark down the most interesting things you see along the way.

Use the space below for your first map.



**Michael Dean: *Having you on***

**Location: Level 3 gallery**

Michael Dean was born in 1977 in Newcastle upon Tyne, UK.

He makes sculptural installations\* using inexpensive materials that are easy to find including MDF, corrugated metal, sand, clay and concrete.

The work you see here is a site-specific commission\*\*, Michael has created work responding to BALTIC's Level 3 gallery space.

He often uses his own writing as a starting point when he makes his installations.

Michael creates sculptures of these words but they're not always intended to be recognisable.



Michael Dean, *Lost True Leaves*  
Installation View 2016.  
Photo Kevin Todora Courtesy  
Herald St, London, Supportico  
Lopez, Berlin and Mendes  
Wood, Sao Paulo

\*An installation is an artwork that transforms a space. It can be created using a variety of materials, including; sound, light, man-made and natural objects.

\*\*A commission is when someone is asked to create something for a specific reason or purpose.

## TALK

In this exhibition Michael has used everyday materials such as pennies and padlocks.

- **What are padlocks usually used for?**
- **Why can you find padlocks on the High Level Bridge?**
- **What do you think you could buy with all these pennies?**

## LOOK

- **What other materials has the artist used?**
- **Where else might you find these materials?**
- **If one of Michael's sculptures could speak, what would it say?**

## DO

Do some storytelling of your own. Finish these sentences:

- **I went to BALTIC and** \_\_\_\_\_
- **Today I've seen** \_\_\_\_\_
- **I hope one day I can** \_\_\_\_\_

Choose one of these sentences and bring it to life by drawing it here:



## BEYOND BALTIC

Collect words from unusual places; cereal packets, receipts or signposts for example.

Photograph or cut out and arrange them to make your own statement, poem or story.

Stand in Baltic Square and look for a big statement made of lights. This is an artwork by artist Tim Etchells. What do you think it means?

## CREATE

Tear out this page.

Rip it into strips.

Twist, bend, fold and roll the paper to write a word that you love.

## *Idea of North*

**Location: Level 4 gallery**

*Idea of North* is a series of displays and projects in the style of an 'expo' event; a large scale exhibition all about a particular theme, idea or concept.

Through the work of artists and guest curators\*, *Idea of North* explores different ideas of 'northern' identity, and celebrates history, creativity and innovation\*\* in the North.

*Idea of North* is a celebration of community, place and belonging, and reveals voices and stories of the North, from recent history.

Visit Baltic Square to see an example of northern innovation by artist Ryan Gander; glow-in-the-dark sculptures made from concrete.



Tish Murtha, *Juvenile Jazz Bands*, Cruddas Park, 1979

\*A curator is someone who selects artworks, and organises how they are displayed in an exhibition.

\*\*Innovation is the act of imagining or creating something new and exciting.

## TALK

Look at the photographs in the back space of Level 4, they show people in the North East from recent history.

- Which photograph is your favourite and why?
- Who do you think the people are in the photographs?
- What do you think their life is like?

## LOOK

The film by artists David Blandy and Larry Achiampong uses footage they have filmed, combined with computer generated imagery.

- Where do you think this was filmed?
- What is it about?
- Why do you think computer games are so popular?

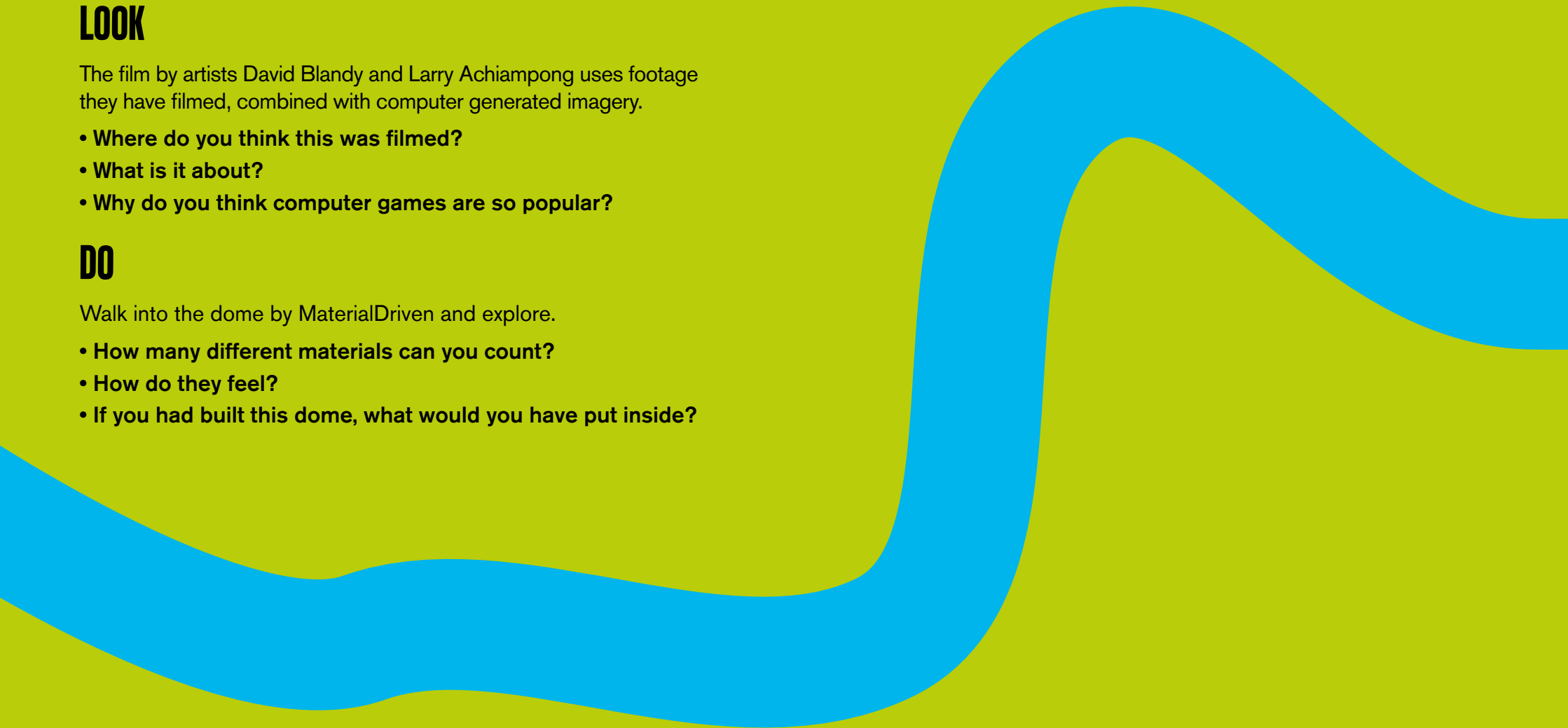
## DO

Walk into the dome by MaterialDriven and explore.

- How many different materials can you count?
- How do they feel?
- If you had built this dome, what would you have put inside?

## CREATE

Look for the model called *TyneDeck*, designed by architects Ryder Architecture, formerly Ryder & Yates. Imagine a new structure that could join Newcastle and Gateshead together. Draw below.



## BEYOND BALTIC

Celebrate your community and pay it forward.

Smile at someone you know, pick up some litter or share your snacks with your friends.

Plan five acts of kindness below and carry them out this summer.

1.

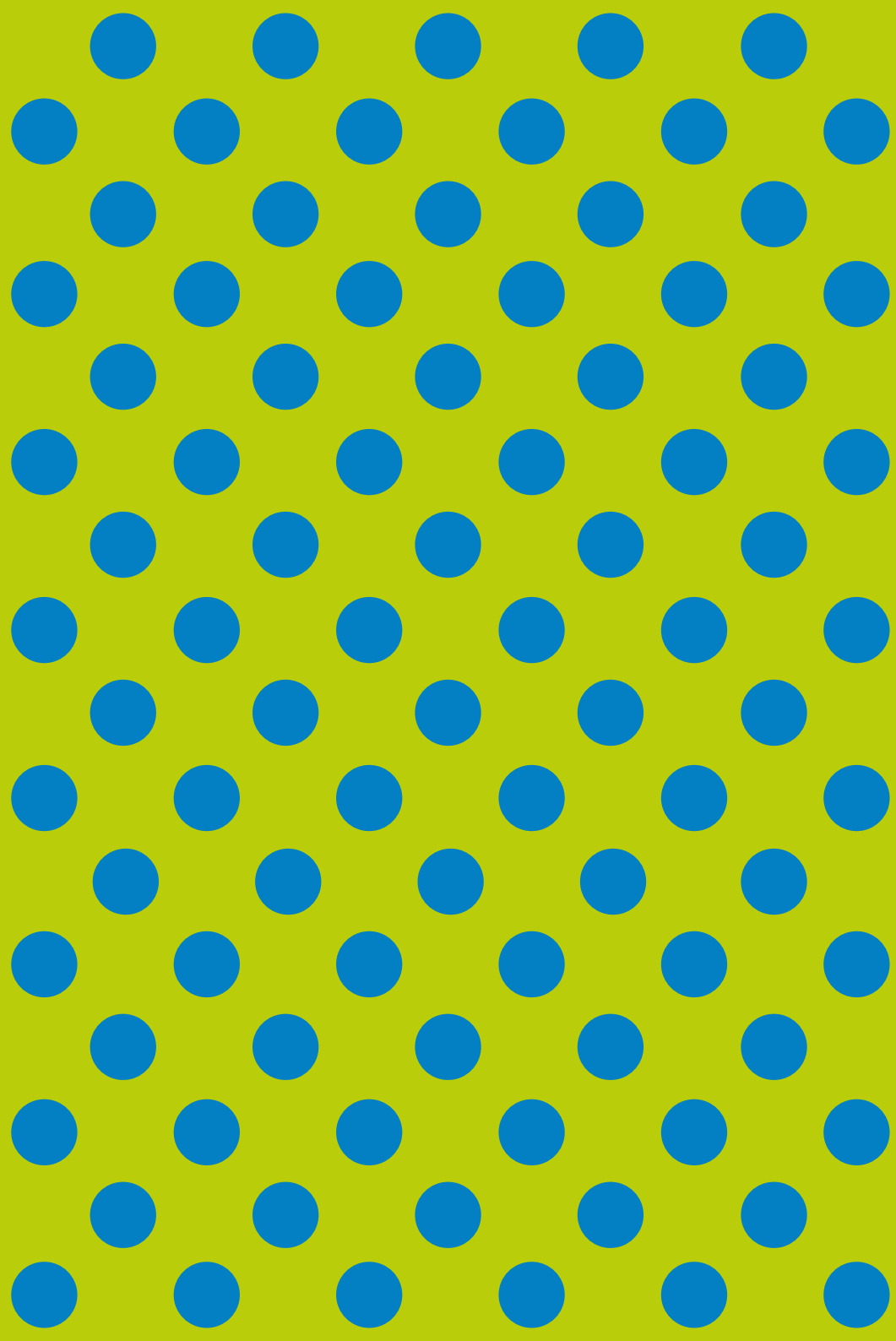
2.

3.

4.

5.

Keep it going. Keep note of the kind things people do for you this summer. Plan something kind for them in return.



**BALTIC**  
www.baltic.art



Supported by  
**ARTS COUNCIL  
ENGLAND**



**Gateshead**  
Council



HM Government

Registered Charity: 1076251